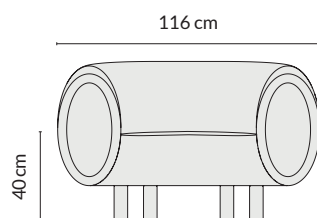
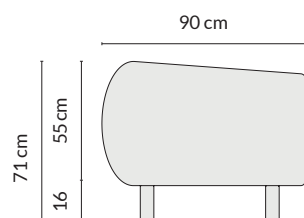


<b>Nombre producto:</b>	<b>TOBI</b>
<b>Códigos:</b>	2800 -2802 - 2804
<b>Descripción:</b>	sofá de 1,5, 2 o 3 plazas
<b>Design:</b>	Elena Trevisan
<b>Año:</b>	2020

## Dimensiones:

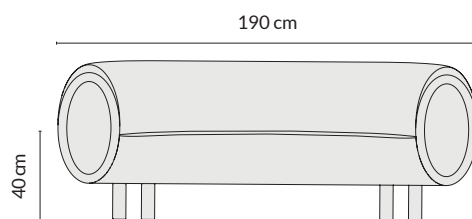
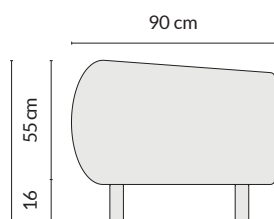
2800 – Sofá de 1,5 plazas

Dimensiones: 116 x 90 x h 71 cm (asiento h 40 cm) - 34 Kg  
Embalaje: 140 x 100 x 80 cm



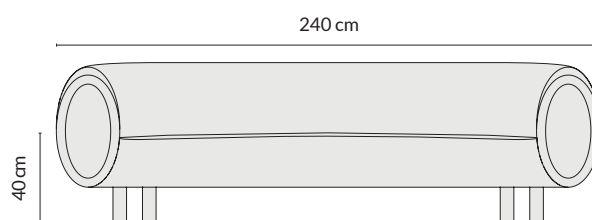
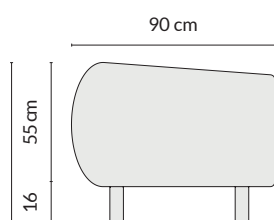
2802 – Sofá de 2 plazas

Dimensiones: 190 x 90 x h 71 cm (asiento h 40 cm) - 45 Kg  
Embalaje: 200 x 100 x 80 cm



2804 – Sofá de 3 plazas

Dimensiones: 240 x 90 x h 71 cm (asiento h 40 cm) - 55 Kg  
Embalaje: 250 x 100 x 80 cm



## Materiales y acabados:

estructura interna en paneles multicapa y madera maciza, con correas elásticas en el asiento acolchado en espuma de poliuretano con densidades variables, forrado con resina de poliéster tacos en madera de fresno teñido o madera de haya lacada.

---

## Tejidos:

fundas técnicamente removibles solo pueden ser removidas por personal calificado.

---



Opciones de tejidos:

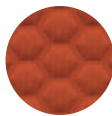
SPAZIO | 100% poliéster, tejido de punto en 3D



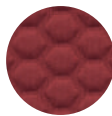
1001



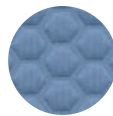
3030



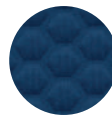
4066



4021



6024



6017



8032



8017



8033

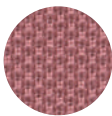
ONE | 100% poliéster, tejido de punto



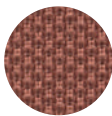
1001



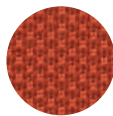
3007



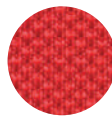
4067



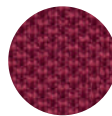
4037



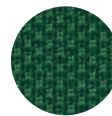
4066



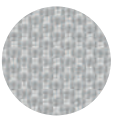
4028



4021



7029



8004



8017

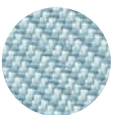


8033

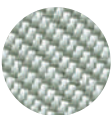


6017

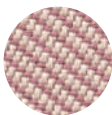
OCEANIC | 100% poliéster reciclado, tejido diagonal bicolor



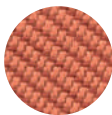
OOC15



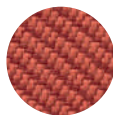
OOC13



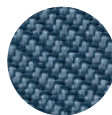
OOC16



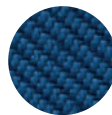
OOC05



OOC12



OOC11



OOC06



OOC01

REGENT | 100% poliéster, efecto terciopelo mate



09



01



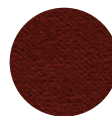
07



02



04



08



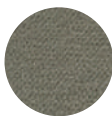
05



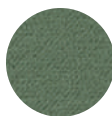
12



11



23



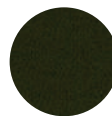
18



20



28



15

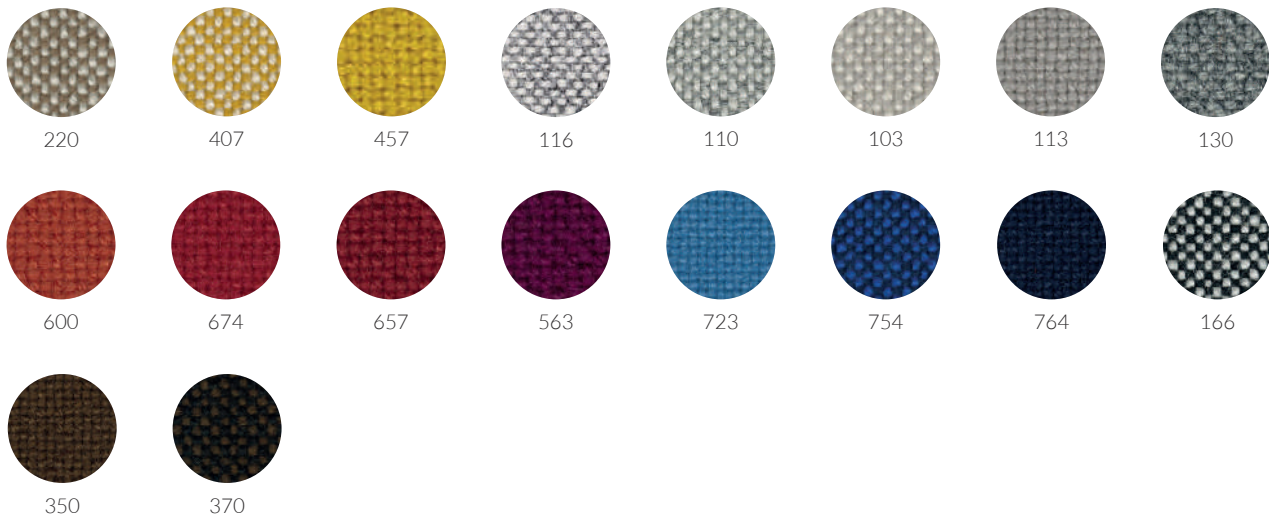


24

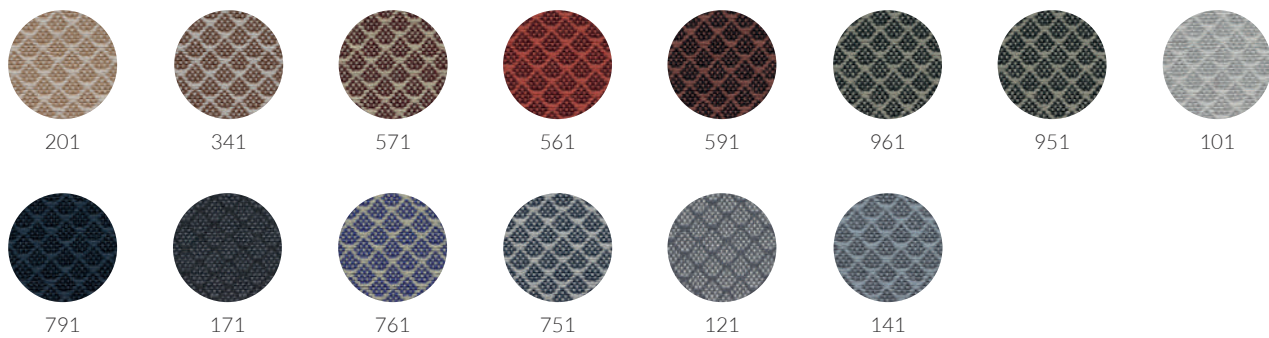


25

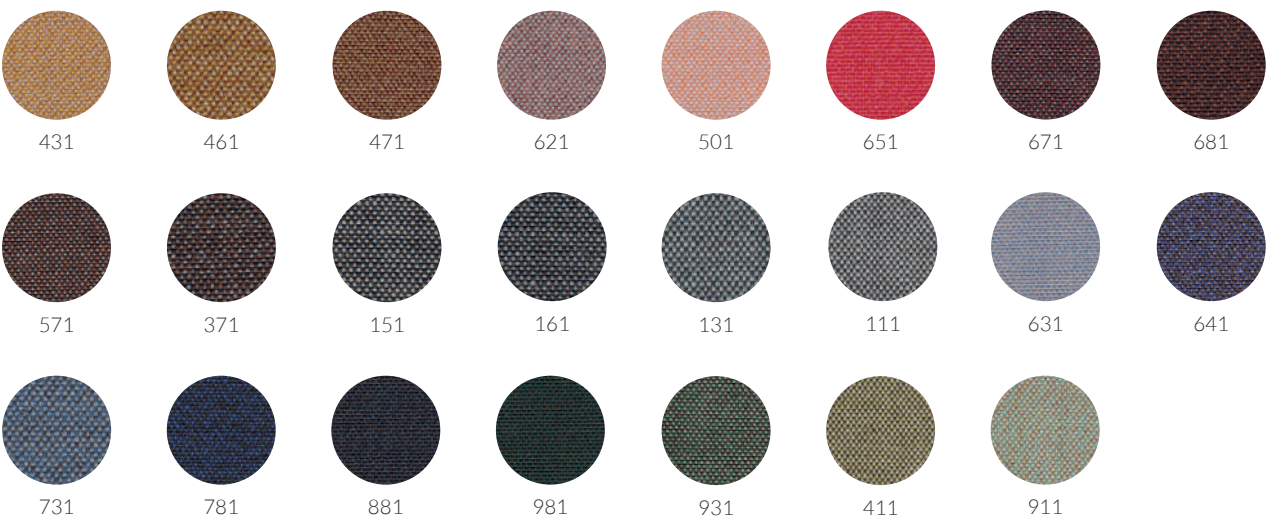
HALLINGDAL 65 | 70% lana virgen, 30% viscosa



JAALI | 90% lana virgen, 10% nailon



ATLAS | 90% lana virgen, 10% nailon



CASHMERE | Piel bovina, plena flor



Sabbia



Cuoio



Taupe



Ferro



Nero

NABUK | Piel bovina



Sabbia



Conchiglia



Grigio



Marrone



Salvia



Terra



Orione

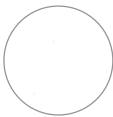


Oceano



Antracite

FLORIDA | Piel bovina



2192



2044



2204



2122



2112



2034



2108



2028



2066



2256



2262



2132



2036



2098



2130



2074



2248



2058



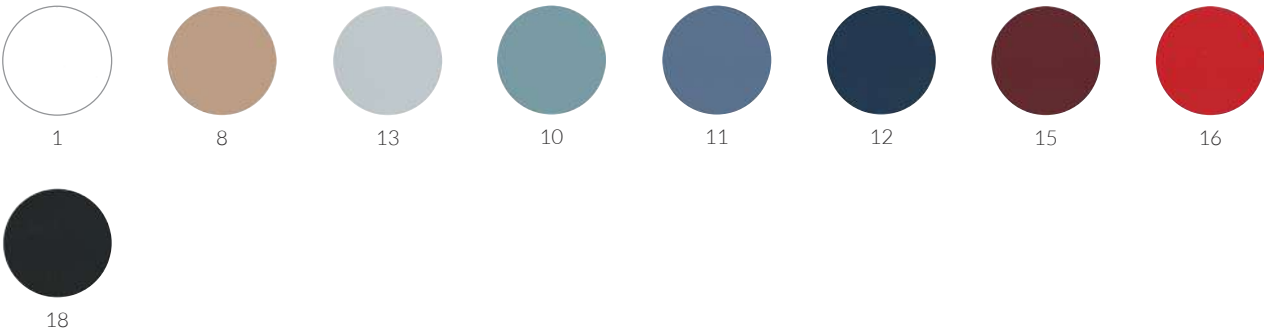
2006



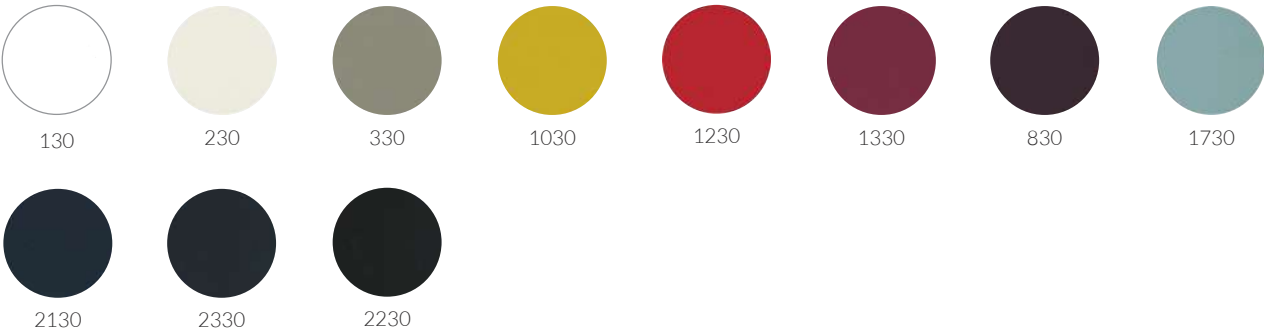
2002







EVE | Tela recubierta biobased



EXTREMA IKON | Tela recubierta



-  **Material eco-sostenible**
-  **Material resistente al fuego**
-  **Material impermeable**
-  **Material absorbente de sonido**

## Acabados de tacos:



### Essencias

---



**Fresno natural**



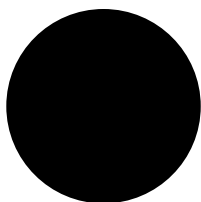
**Fresno gris lobo**



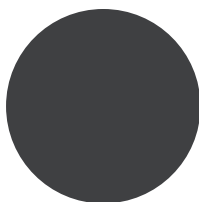
**Fresno negro**

### Lacados

---



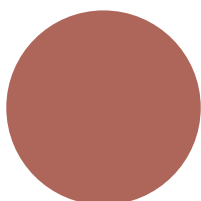
**Lacado negro**



**Lacado antracite**



**Lacado hielo**



**Lacado rojo ladrillo**